



# BML

## Metering Application & Services in the Middle East

# ABOUT US

Founded in 2009, BML began its journey in the United Arab Emirates with a mission to transform the Middle Eastern energy market through innovative metering products, systems, and projects. Over the years, under the leadership of experienced German management, BML has achieved significant growth and has become a prominent player in the industry, notably implementing central metering systems across Abu Dhabi, Dubai, and the Emirates National Grid.

Headquartered in the vibrant city of Abu Dhabi whilst strategically and expertly managed from Germany, BML takes great pride in integrating advanced German engineering technology with local expertise. This unique approach ensures that our clients receive exceptional solutions that surpass their expectations.

At BML, we are dedicated to providing value-driven and cost-effective solutions to our clients, guided by the principles of German management and German quality standards. By leveraging our industry knowledge and remaining at the cutting edge of technology, we strive to offer unmatched services. As we continue to grow, BML is committed to leading the way in Next Generation Energy Analytics Solutions, setting new standards of excellence in the industry.

Join us on our journey toward a more efficient and sustainable energy future. Experience the power of BML – where innovation meets reliability.

# AT A GLANCE



16 years in the market



10 countries



150+ satisfied clients



2,000+ completed projects



3 ISO Certifications

# OUR HISTORY

Since its inception, BML has been actively involved in numerous metering projects worldwide.

2004

## TAPPING INTO THE UAE MARKET

The founders of BML began operating in the UAE market, bringing with them a commitment to German quality and standards.

2009

## COMPANY ESTABLISHED

BML was established in Abu Dhabi, United Arab Emirates, and is strategically managed by experienced German management.

2010

## MARKET EXPANSION

BML started providing a platform for foreign energy businesses wishing to expand their Middle Eastern sales activities.

2017

## BEA PARTNERSHIP ESTABLISHED

BML established a partnership with Baer Energy Automation to promote the company's systems, services, and products including SIGLON and others.

2020

## AGUILON INTRODUCED

Aguilon, a comprehensive system suite was added to BML's product portfolio. This includes modules for power plant optimization, FDM, and PASS systems.

NOW

## BML CONTINUES EXPANDING ITS REACH

BML remains at the forefront of the industry, leveraging its extensive global presence to deliver cutting-edge solutions to over a dozen countries worldwide.

# OUR PRODUCTS

As a well-established local company, BML offers a diverse range of proven, reliable products, ensuring the most effective and tailored solutions for your project.



## Metering Systems

SIGLON is the integrated intelligent automated meter reading (AMR) system for energy data collection, energy data management (EDM) with Processing, Validation, and Verification (DCVS), and operational data management.



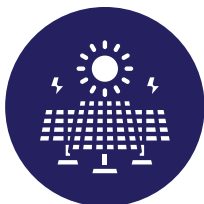
## Meters

Depending on the requirements of your project, BML uses flexible meters that provide a variety of data structures and apply to several utilities, including water, electricity, and gas. The tariff meters are up to Class 0.2S for all applications.



## Data Loggers

Modern data loggers seamlessly integrate with meters, effectively registering pulses and analog values from energy, gas, oil, or water meters, and storing the processed data for subsequent evaluation and settlement. Data loggers also ensure data accessibility even when local communication is temporarily lost.



## Panels

The BML team will advise the best panels for your undertaking as per your project features and financial plan. The panels are then designed and produced with a strict quality control process in accordance with industry guidelines. A full trial of the panels will be performed by our team alongside wiring and protection testing before your final inspection.



## Modems

State-of-the-art modems are installed on-site to enable data of several meters from in- or out-station to be collected. The connectivity also makes it convenient for our engineers to access all metering devices remotely for any necessary evaluation, maintenance, or support issues.

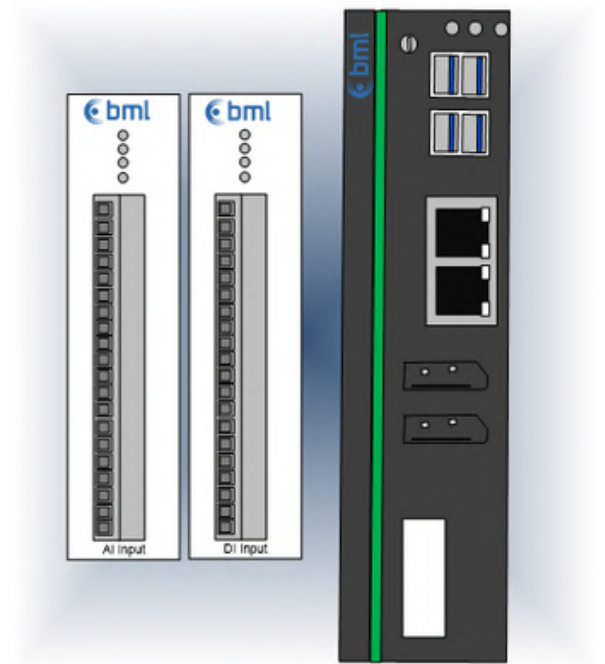
## AGUILON

## Aguilon

AGUILON is a robust and powerful software platform designed to revolutionize industrial operations. Comprising several integrated components, AGUILON begins its journey by measuring crucial process parameters, transforming raw data into valuable insights, and ultimately recommending optimal parameters to maximize plant efficiency.

# DLX-5000

An all-new best-in-class modular concept for data retrieval



The DLX 5000 is a modular data logger offering flexibility in collecting, storing, and exporting data. It continuously reads ModBus registers and stores data in load profiles, allowing for precise time stamping and high-accuracy data acquisition. This makes it ideal for power plants and commercial applications requiring precise settlement data.

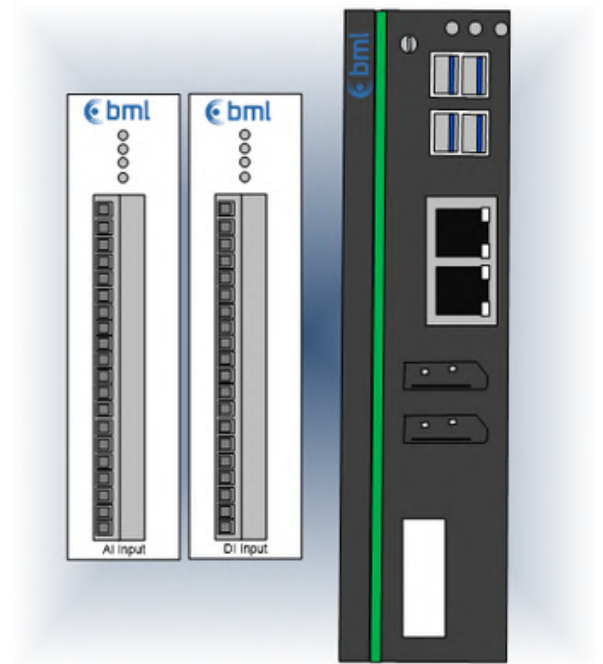
## Application Examples of the DLX-5000:

- Monitoring of Safety Systems
- Control of Valve and Pump Operations
- Monitoring of Electrical Systems
- Industrial Process Control in Chemical Plants
- Oil and Gas Monitoring in Power Plants
- Water Treatment and Steam Generation
- Environmental Compliance Monitoring
- and more...



# DLX-5000

An all-new best-in-class modular concept for data retrieval



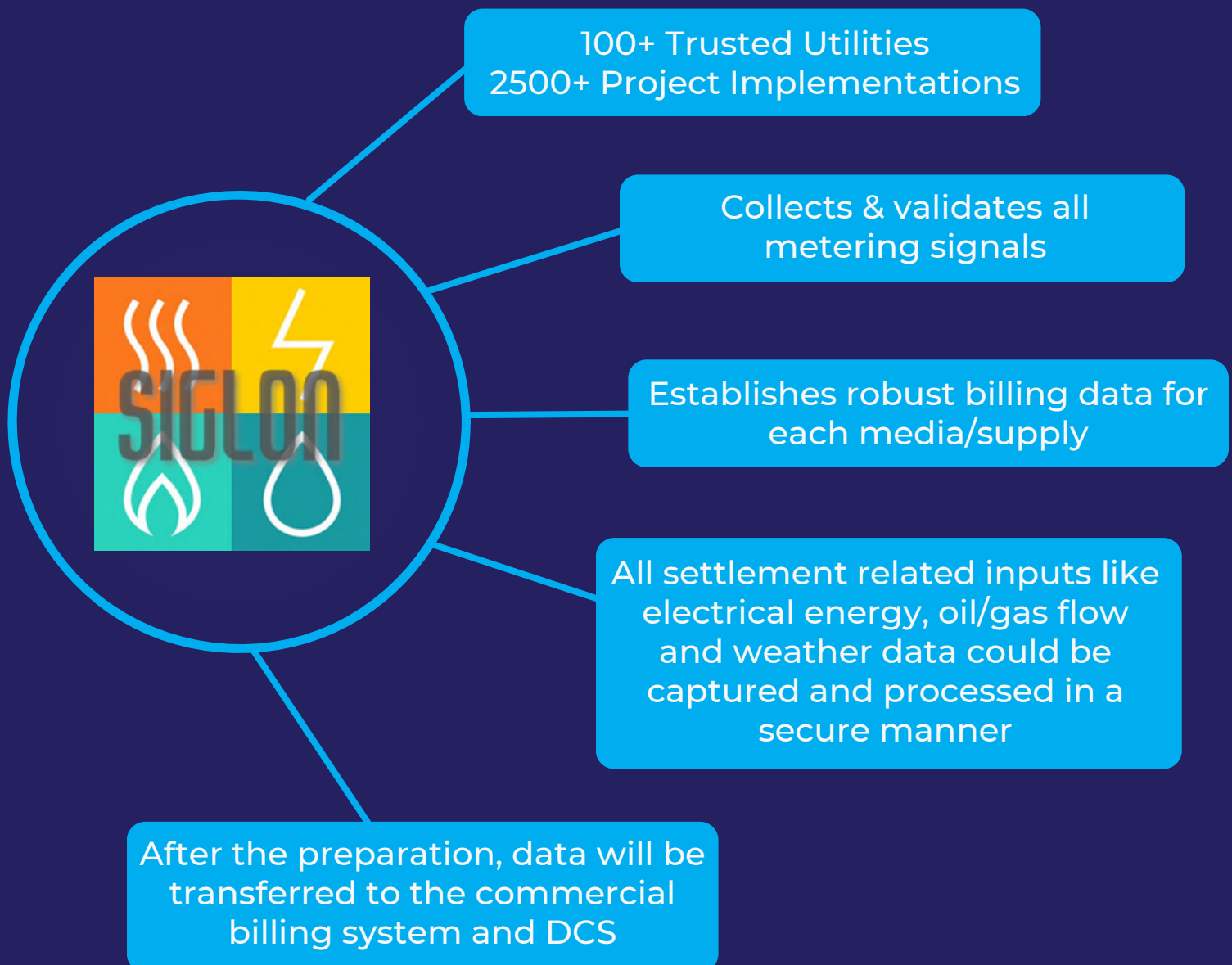
## KEY FEATURES OF THE DLX-5000

Analog Inputs: 8 differential input channels

Digital Inputs: Up to 16 inputs

- Complete integration with the SIGLON system
- Input Range:
  - 0 to 10 VDC
  - 0 to 20 mA
  - 4 to 20 mA
- Resolution: 16-bit
- Accuracy:
  - $\pm 0.1\%$  FSR at 25°C
  - $\pm 0.3\%$  FSR at -10 to 60°C
  - $\pm 0.5\%$  FSR at -40 to 75°C
  - (extended temperature models)
- Isolation: 3k VDC isolation between input channels and system
- Input Impedance: 10 M $\Omega$  (minimum)
- Operating Temperature: -40 to 85°C (-40 to 185°F)
- Counter Frequency: up to 2kHz
- Dry Contact:
  - On: short to GND
  - Off: open
- Wet Contact (DI to Com):
  - On: 10 to 30 VDC
  - Off: 0 to 3 VDC

# Central Tariff Metering System – SIGLON







# Central Tariff Metering System – SIGLON

- Includes all features of a Meter Data Management System (MDMS)
- Regional or country-wide hierarchical system
- Multi-utility (Gas, Oil, Water, Electricity)
- Open for communication media (WLAN, Telecom, Mashed WiFi, Cable)
- Open for existing meter parks (Actaris, Elster, Cewe, L+G, EMH, Schneider, Schweitzer, Power Measurements)
- Data validation and forecast capabilities
- Exports to other systems or databases
- Hot/warm standby or redundant architecture available
- Calculation of missed solar energy (Deemed Energy)
- Intuitive design and Man Machine Interface (MMI)
- Rights management for allocation of access and processing rights
- Can be integrated with local domains
- Accessible even with iPads or mobile phones



# Settlement Billing System – AGUILON

## Key Features of AGUILON:

**Measuring Process Parameters:** AGUILON measures key parameters in your plant, helping you understand your operations and make better decisions.

**Turning Data into Insights:** AGUILON transforms raw data into valuable insights, giving you a clearer view of your plant's performance and areas for improvement.

**Recommendations for Optimization:** AGUILON suggests ways to enhance plant efficiency, helping your team make informed decisions for ongoing improvements.

**Real-Time Data Access:** AGUILON provides real-time access to all equipment data, enabling quick decision-making.

**Complete Monitoring:** The platform offers comprehensive monitoring of your plant's equipment, with real-time tracking and analytics for smarter decision-making.

**Billing Integration:** AGUILON simplifies billing by incorporating relevant data, ensuring accuracy and transparency.

**Predictive and Prescriptive Analytics:** AGUILON uses past data to predict future issues and provides actionable recommendations to improve plant performance proactively.



# Settlement Billing System – AGUILON

## Benefits of AGUILON:

**Enhanced Efficiency:** By measuring, analyzing, and optimizing, AGUILON contributes to enhanced plant efficiency, ensuring that your operations run at peak performance levels.

**Real-time Decision Support:** The real-time accessibility of data empowers your team with the information needed for quick and effective decision-making.

**Cost Optimization:** AGUILON's recommendations and insights contribute to cost optimization by identifying areas for improvement and efficiency gains.

**Proactive Maintenance:** Through predictive analytics, AGUILON enables proactive maintenance, minimizing downtime and extending the lifespan of equipment.

Choose BML as your strategic partner in maximizing plant efficiency. Experience the transformative power of intelligent software solutions that bring unparalleled insights and optimization opportunities to your industrial processes.

# OUR SERVICES

At BML, we understand that each phase of a project demands unique and specialized services. That's why we commit to our customers to be there for them at every stage of the journey – before, during, and after a project is completed. Moreover, our dedication extends beyond project boundaries, as we proudly offer services that are independent of specific projects.



## Consultation

Before a project begins, our team at BML engages in thorough planning and consultation, ensuring a comprehensive understanding of your unique requirements and objectives. We work closely with you to develop tailored solutions that align with your goals, laying the groundwork for successful project implementation.

During the project execution phase, BML is committed to providing seamless support, meticulous project management, and efficient troubleshooting. Our team's expertise ensures that your project progresses smoothly, strictly adhering to timelines and quality benchmarks.

After the completion of a project, our commitment doesn't end. BML remains a reliable partner for ongoing support, maintenance, and any additional services you may require. Our post-project services are designed to ensure the sustained success and longevity of the implemented solutions, guaranteeing that you continue to reap the benefits long after the project concludes.

In addition to project-specific services, BML proudly offers diverse services independent of projects. These encompass ongoing technical support, system enhancements, and proactive maintenance to optimize the performance and efficiency of your energy solutions.



## Calibration

BML provides assistance with a comprehensive calibration service to find deviations and inaccuracies in the measuring instruments of your metering system. In this service, any data that are out of the "normal" range will be found by the calibration. First, normal values are set for the measuring instrument's or measuring means' tolerances. The calibration can then commence.

In most cases, the calibration service is provided in the following order: the measurement procedure is first described, followed by the detection of management conditions, the calculation of the necessary standards, the consideration of mathematical concepts, and finally, the collection and recording of the results.

# OUR SERVICES



## Commissioning

At BML, we uphold the highest standards of quality and precision in every phase of your project. Our commitment to excellence encompasses the entire process, from design to ongoing maintenance, ensuring that each system and component aligns with your operational requirements.

**Design:** Our experienced engineering team crafts solutions tailored to your unique goals, prioritizing efficiency, reliability, and scalability.

**Installation:** We take pride in our seamless installations, following industry best practices for accurate and safe component placement.

**Testing:** Rigorous testing is integral to our process. Before launch, we validate the functionality and reliability of every system, ensuring it meets your expectations.

**Operation:** After installation, BML is dedicated to the smooth operation of your systems, offering ongoing support and monitoring to address any issues promptly.

**Maintenance:** Our proactive maintenance services identify potential issues early, maximizing the performance and lifespan of your systems while safeguarding your investment.



## Maintenance

At BML, we are dedicated to your satisfaction beyond the initial installation, recognizing that ongoing reliability and efficiency are crucial. That's why we offer prompt and dependable maintenance services for all systems we install.

### Key Features of BML's Maintenance Services:

**Proactive Approach:** We identify and address potential issues before they escalate, minimizing downtime and maintaining optimal performance.

**Timely Response:** Our maintenance team is always ready to respond quickly to service requests, whether for routine check-ups or unexpected problems.

**Expert Technicians:** Our skilled and certified technicians efficiently diagnose and resolve issues with their in-depth knowledge of our systems.

**Customized Maintenance Plans:** We tailor our maintenance plans to meet your unique needs, ensuring focused attention without unnecessary interventions.

**Documentation and Reporting:** We provide regular reports on maintenance activities and system performance, keeping you informed and in control.

**Remote Monitoring:** Our advanced technology allows us to offer remote monitoring, enabling proactive issue identification and resolution without always needing on-site visits.



# OUR SERVICES



## Accuracy Tests

A testing device with a high degree of accuracy is required for meters, particularly those in the 0.2s class, to be tested. The idea of testing each individual meter on-site with current and voltage sources has gained popularity, and our meter testing technology is particularly adaptable and appropriate for on-site testing, and are tested according to ISO 17025.

An ideal solution for testing electrical meters is provided by our engineers, who make use of a adaptable combination of test sets, operating software, and accessories.



## Factory Acceptance Test (FAT)

Customized testing known as the Factory Acceptance Test (FAT) ensures that equipment is constructed and operates following design specifications both during and after assembly. FAT checks that the controls and components are working as intended for the equipment's intended purpose.

During the FAT, with our extensive checking process, you can get independent proof of functionality, quality, and integrity. BML engineers will perform an on-site test and verify all crucial documents, such as diagrams, plans, drawings, and manuals. Our engineers will also test the testable range of foreseeable conditions, including misuse and error, to ensure that your metering system performs as expected.



## Site Acceptance Test (SAT)

After the systems have been installed on site, Site Acceptance Testing (SAT) provides an opportunity for final confirmation that the performance that was experienced during Factory Acceptance Testing (FAT) will continue. This ensures that nothing has changed or been damaged during shipment and installation.

After the metering systems have been installed and integrated with support systems, this procedure typically entails carrying out comprehensive functional testing on them. To ensure continuity and completeness, BML will ensure that the SAT is led by the same engineers who installed and carried out the FAT.



# PAST PROJECTS

BML has actively participated in multiple metering-related projects throughout the United Arab Emirates and other Middle East markets, such as the Kingdom of Saudi Arabia, Oman, Qatar, and Bahrain. These projects revolve around power plants, substations, and central I-AMR Systems (Intelligent Automated Meter Reading Systems).

Here are some of our past projects:

- Central Metering Systems / Instation - EWEC(UAE)
- Central Metering Systems / Instation - DEWA (UAE)
- Central Metering Systems / Instation - ADNOC (UAE)
- Central Metering Systems / Instation - SEWA (UAE)
- Central Metering Systems / Instation - AADC (UAE)
- Emirates Global Aluminum Energy Settlement System / Instation (UAE)
- Dubai Municipality Central Instation (UAE)
- Energy Settlement System: Tangier Med Utilities (Morocco)
- Emirates National Grid Energy Settlement System (GCCIA/ENG) (UAE)
- Central Metering Systems/ Instation,Copper Belt Corporation (Zambia)
- Barakah Nuclear Plant: 5600 MW IPP (UAE)
- Taweelah A1: 1.6 GW CCGT (UAE)
- Taweelah A2: Power & Desalination Plant (UAE)
- Taweelah B1 & B2: New Extension CCGT (UAE)
- Fujairah F1: 893 MW CCGT (UAE)
- Fujairah F2: 2000 MW CCGT (UAE)
- Fujairah F3: 2.4 GW CCGT (UAE)
- Shuweihat S1: 1615 MW CCGT (UAE)
- Shuweihat S2: 1627 MW CCGT (UAE)
- Shuweihat S3: 1647 MW CCGT (UAE)
- MIPCO Al Mirfa 1600 MW CCGT (UAE)
- SAS Al Nakhil: 1671 MW CCGT (UAE)
- Hamriyah CCGT: 1.8 GW IPP (UAE)
- Hassyan Coal Power Plant 2.4 GW (UAE)
- Shuaibah-1 CCGT: 900 MW CCGT (KSA)
- Shuqaiq CCGT: 2640 MW (KSA)
- Taiba-1: 1800 MW CCGT (KSA)
- Taiba-2: 1800 MW CCGT (KSA)
- Qasim-1: 1800 MW CCGT (KSA)
- Qasim-2: 1800 MW CCGT (KSA)
- Rabigh Ext CCGT 1200 MW (KSA)

# PAST PROJECTS

- Q POWER Ras Laffan Power Company 1025 MW CCGT (Qatar)
- SHAMS: 100 MW Solar PV (UAE)
- MBR Solar Phase-I: Solar IPP(UAE)
- MBR Solar Phase-II: 200 MW Solar IPP (UAE)
- MBR Solar Phase-III-A, III-B & III-C: 900 MW Solar IPP (UAE)
- MBR Solar Phase-IV: 950 MW Solar IPP (UAE)
- MBR Solar Phase-V: 900 MW Solar IPP (UAE)
- MBR Solar Phase- VI: 1800 MW Solar IPP (UAE)
- Sweihan PV1 1200 MW Solar PV IPP (UAE)
- Al Dhafra PV2 2000 MW Solar PV IPP (UAE)
- Ajban PV3 1500 MW Solar PV IPP (UAE)
- Dumat Al Jandal: 400 MW Wind Farm Project (KSA)
- Wad-Al Shamil 500 MW Wind Farm Project (KSA)
- Al Ghat 600 MW Wind Farm Project (KSA)
- Jeddah 300 MW PV Solar Project (KSA)
- Sudair Solar: 1.5 GW PV IPP (KSA)
- Rabigh: 300 MW Solar PV IPP (KSA)
- Al Shuhaibah-1: 600 MW Solar PV IPP (KSA)
- Al Shuhaibah-2: 2000 MW Solar PV IPP (KSA)
- Layla 90 MW Solar PV IPP (KSA)
- Wadi Al Dawasir: 120 MW Solar Project (KSA)
- Al Saad -1: 300 MW Solar PV IPP (KSA)
- Al Saad-2: 1.2 GW Solar PV IPP (KSA)
- Al Henkiyah-1: 1.1 GW Solar PV IPP (KSA)
- Sharjah National Oil Company PV Plant 50 MW (UAE)
- Mirfa 2 RO Desalination Plant (UAE)
- Taweelah RO Desalination Plant: 200 MIGD IWPP (UAE)
- Shuweihat S4 RO Desalination Plant (UAE)
- Mirfa Wave IWP (UAE)
- Hassyan RO 180 MIGD Phase-1 (UAE)
- Sharqiyah RO Plant: OPWP (Oman)
- Dubai Waste to Energy Power Plant (DWMC/DM)
- BEEAH Waste to Energy Sharjah Power Plant (UAE)
- Hadid Al Jubail Steel Plant Metering System (KSA)
- Hail & Gasha Offshore ADNOC (UAE)
- Borouge-4 ADNOC (UAE)



Scan the QR code for  
further information

# CONTACT US

If you have any questions or inquiries, a member of our staff will be happy to assist you. Please feel free to contact us by telephone or email, and we will respond to you as soon as possible.

We appreciate your interest and look forward to providing you with all you need to make informed decisions.



## **BML**

P.O Box 111393  
Suite 1207, Sky Tower  
Reem Island  
Abu Dhabi  
United Arab Emirates



info@bml-metering.com



+971 2 627 2097



+971 55 695 3580



<https://bml-metering.com/>





